



# First Presbyterian Church of Taymouth

## FEBRUARY 2022

### Taymouth Tidings



## WELCOME!

Sunday Worship—9:30am

Rev. John Scott Kroener, Pastor

Sarah Schriber— Secretary, Heidi Smith— Music Director

Christine Callender-Clerk of Session, Carolyn Weston-Treasurer

Dawn Patrick—Financial Secretary and Christian Education Director

Floyd Roebuck-Youth Director, Paul Fortier-Custodian

12517 Morseville Rd. Birch Run, MI 48415

Phone: (989)624-9473, Website: [www.taymouthchurch.com](http://www.taymouthchurch.com)

Email: [taymouthchurch@msn.com](mailto:taymouthchurch@msn.com)

Connect on Facebook Taymouth Presbyterian Church

## WORSHIP SERVICES

### LIVE STREAM TO FACEBOOK AT 9:30 A.M. EVERY SUNDAY

For those watching from home, bulletins are available at [taymouthchurch.com](http://taymouthchurch.com).

*Call the church office for assistance or more information.*

## Church Office Hours

Please call the church with any concerns or prayers. The office hours are Tuesday, Thursday, and Friday, from 9:00 a.m. to 1:00 p.m.

We are here for you!

## Applications Open!

Scholarship Applications are now available for the Muriel Lakey Scholarship and the McCabe Scholarship

*See page 4 for more information!*

## Missions Food Fight

Missions is having a “FOOD FIGHT” with the NORTH side of church against the SOUTH side of the church. The collected items are for the Food Pantry at SS. Francis and Clare in Birch Run.

There will be a basket at the front of the sanctuary for each side to place their items. There will also be a jar for each side to place your monetary donation that will help the pantry to purchase items like milk, bread, egg etc.

### SPECIFIC ITEMS ARE TO BE COLLECTED EACH WEEK FROM THE LISTING BELOW

Week One Jan. 9 –16 <sup>th</sup>	Cereals
Week Two Jan. 17 –23 <sup>rd</sup>	Small Cooking Oil
Week Three Jan. 24 –30 <sup>th</sup>	Mac & Cheese Boxes
Week Four Jan. 31– Feb. 6 <sup>th</sup>	Noodles and Sugar
Week Five Feb. 7 –13 <sup>th</sup>	Minute Rice, Rice Packages
Week Six Feb. 14 –20 <sup>th</sup>	Flour
Week Seven Feb. 21 –27 <sup>th</sup>	Paper Products

SEE THE BULLETINS FOR MORE INFORMATION

## Prayer Circle



To activate the church's prayer circle please call Cindy Rabe (989) 624-9274.

Prayer requests are conveyed by telephone.

# FEBRUARY 2022

SUNDAY	MONDAY	TUESDAY	WEDNESDAY	THURSDAY	FRIDAY	SATURDAY
<b>30</b> 9:30 a.m. Worship Service After Service Annual Meeting with Brunch in the Fellowship Hall FOURTH SUNDAY AFTER EPIPHANY	<b>31</b>	<b>1</b> 7:00 p.m. B&G Meets	<b>2</b>	<b>3</b>	<b>4</b>	<b>5</b>
<b>6</b> 9:30 a.m. Worship Service 10:30 a.m. Worship Committee SCOUT SUNDAY FIFTH SUNDAY AFTER EPIPHANY	<b>7</b>	<b>8</b> 7:00 p.m. Session Meets	<b>9</b>	<b>10</b>	<b>11</b> 7:00 p.m. Family Game Night	<b>12</b>
<b>13</b> 9:30 a.m. Worship Service SIXTH SUNDAY AFTER EPIPHANY	<b>14</b> VALENTINE'S DAY	<b>15</b>	<b>16</b> 6:00 p.m. St. Valentine's Potluck	<b>17</b>		
<b>20</b> 9:30 a.m. Worship Service SEVENTH SUNDAY AFTER EPIPHANY	<b>21</b> PRESIDENT'S DAY	<b>22</b> Newsletter Items Due for February	<b>23</b>	<b>24</b>		
<b>27</b> 9:30 a.m. Worship Service TRANSFIGURATION OF THE LORD	<b>28</b>	<b>1</b>	<b>2</b>	<b>3</b>		



**First Presbyterian  
Church of Taymouth**

**FAMILY  
GAME NIGHT**

COME OUT AND PLAY THE GAMES YOU KNOW AND LOVE!  
 LEARN NEW GAMES!  
 BRING YOUR FRIENDS AND FAMILY!  
 MEET NEW PEOPLE!


**FEBRUARY 11TH  
FROM 7:00 - 9:00 PM**

**FOR MORE INFORMATION**  
 (989) 624-9473 | [WWW.TAYMOUTHCHURCH.COM](http://WWW.TAYMOUTHCHURCH.COM)  
 12517 MORSEVILLE RD. BIRCH RUN, MI 48415

**COFFEE HOUR VOLUNTEERS**

A BIG thank you to all those who volunteered to be coffee hour hosts in January and February.

*Thank you to everyone who signs up to help make our coffee hours happen!*



**ST. VALENTINES POTLUCK**

Wednesday,  
February 16  
6:00 pm

Bring a Dish  
& Eat Hardy!



# A ST. VALENTINE'S GREETING

The Rev. Dr. Teri McDowell Ott, discusses how the English language uses only one word to depict and describe "love." She contrasts our one and only English word, love, with six distinct Greek words describing the essence of love:

*The Greeks had six words for love. **Eros**, named after the Greek god of fertility, describes sexual desire. **Philia** describes love towards friends, like the deep bonds soldiers share or the college roommate with whom we still share our secrets. **Ludus** is playful, flirtatious and casual, the love felt on the dance floor of your best friends' wedding. **Pragma** is longstanding, like long-married couples enjoying each other's company without having to say a word. **Philautia**, self-love, can be experienced as narcissism or as healthy self-care and self-compassion. **Agape** is the love we read about in 1 Corinthians 13 — it is a radical love for others, grounded in an ethic to care for all of humanity, beyond our differences and despite our immersion in a world addicted to violence. **Agape** is God's love for humankind in the life, death, and resurrection of Jesus Christ. For Christians, **agape** inspires our lives and our call as disciples. (Presbytery Outlook Magazine, Looking in the Lectionary, January, 2022)*

When the Apostle Paul writes his first letter to the church at Corinth, he confronts and addresses conflict between parishioners. These parishioners are rude, angry, boastful, envious, arrogant, and insist on having their own way. Paul wants to heal this church's wounds with a healing balm, a first-aid ointment, which changes the church's negative perspective to a positive viewpoint. He wants them to become Christ-like. He wants them to love one another as Jesus Christ loves them. Jesus' "agape love" is the answer. This spiritual transformation depicts God's love based on the idea of caring for others; actually, it is the caring for *all* people, *all* of God's children, not just select people. This particular form of love becomes the basic foundation in our call to discipleship and being the Church.

Although First Corinthians chapter 13 is a favorite biblical passage read at weddings, I invite you to make it a favorite passage to be read on St. Valentine's Day. Contemplating God's love for our lives is insightful. The Apostle Paul invites the Corinthian Church and us to do this with the understanding of what "agape" love means.



"Happy St. Valentine's Day  
with Love, *Agape Love*!"

Shalom,  
Pastor Scott

## NEWS FROM THE CLERK'S DESK

### SESSION MEETING: JAN. 11<sup>TH</sup>

The following items were discussed and approved at December's Session meeting:

Banking is changing online banking procedures. Dawn Patrick was made honorary signer. No check signing ability but can take care of banking questions as Financial Secretary.

Family Game night was a fun, successful night.

Annual Budget presented and approved.

2022 Communion dates were approved.

Birch Run High School Band will now be providing Music the 1st Sunday of December as a part of their planned year.

Social Media meeting January 22, 2022. Discussing Soundboard plans.

Brunch on January 30, 2022, will have a free will offering that will go towards the Soundboard.

Baptism request and New member requests both approved.

February Potluck approved for February 16, 2022.

Thank you for your service on Session: Sharon Leach, Dennis Neahusan, Sharon Peters and Adam Smith.

### NEXT SESSION MEETING:

**FEB. 8<sup>TH</sup>, 2022, AT 7 P.M.**

Christine Callender, Clerk of Session

*For a complete list of all items discussed at the Session meeting, please contact the church office or the Clerk of Session.*

## SUNDAY SHEPHERD & USHERS

In order to make each Sunday's worship a wonderful experience for all. We are in need of volunteers for ushering and Sunday Shepherd.

Ushers pass out bulletins, collect the offering, get to ring the church bell, and light the alter candles.



The Sunday Shepherd oversees and monitors the safety of our congregation, and is responsible to call 911 in case of an emergency.

If you are interested in volunteering, please see **Pastor Scott** for February.



## MISSIONS

Thank you to all who supported the Shoebox ministry as Kathy Rogers was able to deliver 36 boxes, valued at \$25 each for a total of \$900.

Our Cookie Walk which included the Mission Marketplace was held together for the first time this year and was a huge success as \$160 was earned from the Silent Auction, \$1,189 from the auction and other items for sale and \$763 from the cookie walk for a total of \$2,112. A huge "thank you" to all our bakers, crafters, helpers and to Jim Peter for his auctioneering skills.

The first Sunday of our Food Fight brought in 42 boxes of cereal and 20 cans of food, with the North side in the lead. Thank you all for your donations and the Food Pantry was super happy and looking forward to our next load and surprised we were collecting cash, as well, for their perishable items.

Ladies, save your \$\$\$\$ for on April 30th there will be plenty of items to choose from the Women At Risk Display just in time for Mother's Day.

Wishing you all a Happy Valentines Day.

Janette Gonzales  
MISSION COMMITTEE CHAIR



## SHOEBOXES FOR SAGINAW

A big THANK YOU for the generosity this congregation showed at Christmas for the Shoeboxes for Saginaw project. Our church donated 38 shoeboxes filled with special gifts to the program. These boxes are delivered to about 15 organizations in Saginaw including Emmaus House, Saginaw Rescue Mission, East Side Soup Kitchen, McNalley House, St. Rita's Home for Young Mothers, Mustard Seed, and Underground Railroad. Your kindness helped make Christmas special for women in unfortunate circumstances.

Thanks so much.  
Kathy Rogers

## FUNERAL COMMITTEE

Funeral Committee is in need of volunteers to make deserts for funeral luncheon's. If you are able to help, please sign up on the sheet in the fellowship hall. You may already be on a past list, but we are currently updating all our information. Thank you for all your help!

Cindy Maher

## YARN AND THREAD

Just a reminder about the cupboard in the Fellowship Hall. There are beautiful prayer shawls and lap robes. Share a joy or extend comfort to a loved one. These are for you to take.

*Holly*



## MURIEL LAKEY SCHOLARSHIP

The Church will begin accepting applications to the Muriel Lakey Scholarship beginning February 1<sup>st</sup>. Anyone who is pursuing post-high school education is welcome to apply as long as the following three criteria are met:

- Member of the Church
- Financial need
- Involvement in the life of the church.

All factors being equal, higher consideration will be given to those who have not previously received a scholarship. Completed applications may be mailed, emailed, or dropped off to the church office. If you have any questions, please ask.

**APPLICATION DEADLINE: MARCH 31<sup>ST</sup>**

## MCCABE CHARITABLE FOUNDATION SCHOLARSHIP

The McCabe Scholarship Program is available Presbyterian:

- Residents of Bay, Saginaw, or Midland counties
- Enrolled full-time in undergraduate studies at Delta College or Saginaw Valley for the entire academic year.

For more information please visit:  
<https://learnmore.scholarsapply.org/mccabescholarship/>

## ANIMAL SHELTER DONATIONS

Looking for old bed pillows, blankets, pillowcases, towels and dog food. To be given to the Saginaw Animal Shelter and/or Amazing Grace Animal shelter to put in the kennels to make the animals feel more secure.

**Contact Janette at (989)751-2371  
for pick up or give your donations  
to her**



## CHRISTIAN EDUCATION

The Children's Christmas program took place during the worship service on Sunday, January 9. Peter, Frances, Grace, Rowen, Jaxon and Benjamin had fun singing the songs they had learned and did a great job! Thank you to Heidi Smith for helping get them ready. A Noisy offering was collected and the annual candy bags were given out. Also, our bible friends (aka. The puppets) presented the Christmas story and Epiphany during the children's sermon. Thank you to Sharon Peters, Kylie Gammons, Regan and Jack Kribs and Carissa Billings for all the help! Thank you to Floyd and Elizabeth for the creativity of putting it all together!



God Bless,  
Dawn Patrick  
CE Director

# PER CAPITA

Near the close of the year, we begin looking at our finances and budget. One of the largest portions to take care of is the Per Capita. As of this printing, we have collected \$2,188.84 needed of our total due \$3,911.36. Balance remaining to collect is \$1722.52. If you have not already done so, please prayerfully consider making your per capita contribution by December 31.

## WHAT IS PER CAPITA?

PER CAPITA has been part of our funding history for over 150 years. When presbyteries, synods, and the General Assembly meet, they are conducting the legislative and judicial business of the church and incur necessary expenses. There are also some necessary administrative expenses involved which enable these ecclesiastical, legislative, and judicial functions to be performed. Historically, per capita has been used to fund these. Importantly, per capita funding enables governing councils to make decisions regarding distribution of mission dollars without itself being funded by those same dollars.

The whole church shares in these expenses since everyone who is a member shares in the benefits of this system of church government. Per capita provides for the financial participation of all local churches as part of a connectional and representative church, thus providing for unity and mutual responsibility within the church.

## HOW IS PER CAPITA CALCULATED?

The Per Capita Apportionment in the Presbytery of Lake Huron is based on a portion of certain salaries and expenses which are part of the operating expenses of the Presbytery.

Per Capita is the cost of being a Presbyterian, and if each member pays the per capita amount above his/her pledge or regular giving, pressure on the local budget is reduced.

## Paying per capita is similar to:

- contributing one's dish to a potluck meal
- paying to be connected to the internet
- paying for the benefit of utilities, like electricity, gas, water
- pitching in with others to pay for gasoline on a road trip

In order to keep presbytery's per capita rate from escalating the per capita portion of the budget is subsidized with a distribution from Presbytery's investments.

## WHERE DO OUR PER CAPITA DOLLARS GO?

The amount that is set for per capita apportionment is a calculation based on the number of church members and the budget established annually by each governing body. At the presbytery level per capita pays for a number of items including:

- the mortgage payment on the presbytery office
- the office of the Stated Clerk including his salary and that of the Recording Clerk
- salaries of the Financial Secretary, Treasurer and the Administrative Assistant
- insurance coverage, legal counsel, annual audit
- costs associated with operating the presbytery office
- meeting costs for our standing units

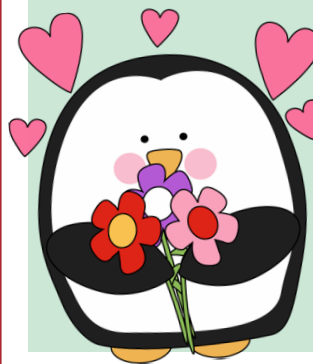
# STEWARDSHIP

Dear Church Family and Friends!

A new Budget year has begun and the Finance committee will be looking at ideas to help with financial stewardship. The Lord continues to bless us in so many ways from our beautiful building to paying our bills each month. We will be looking at different ideas to encourage giving and are open to hear your suggestions as well!

At our regular Session meeting in November, Session members voted to defer our 2022 Per Capita total due of \$3219.00 into twelve monthly payments of \$268.25. This deferment plan will help alleviate the Per Capita commitment and give time for everyone to make their donation. The 2022 Per Capita amount per member is \$29.00. Thank you all for your prayerful giving!

Blessings,  
Dawn Patrick, Financial Secretary



# COMMUNITY RESOURCES

## PERSONAL AND HOUSEHOLD ITEM ASSISTANCE

**Sarah's Closet:** Our mission provides adult clothing for men and women! Clothing items include: shoes, socks, dresses, pants, shirts, coats, and undergarments. Located at the Birch Run United Methodist Church (989) 624-9340; 12265 Church St, Birch Run.

**Emmaus House of Saginaw:** Provides a free thrift store. Items include: clothing, household items, linens, towels, toys, shoes, furniture, and some appliances. All items were donated, and donations accepted. Open Mon. -Sat. 9:30a.m. -3:30p.m. 733 South 14th St. Saginaw MI 48601

## BABY SUPPLIES

**Baby Pantry:** Christ Lutheran Church of Birch Run, located at 8101 Poellet St, is host to the local Baby Pantry. Call the church office at (989) 624-9378 for hours of operation.

**Can Council Great Lakes Bay Region:** Provides diapers to families in need for Saginaw and Bay County Residents. Call (989) 752-7226 for contact free pick up. 1311 North Michigan Ave. Saginaw MI 48602

## FOOD PANTRIES

**Ss. Francis & Clare Catholic Church:** is host to a Community Food Pantry. Hours are, Mon. 9:00-11:30 am, Wed. 1:00-3:00 pm, or by appointment. (989) 624-9098 12157 Church St., Birch Run.

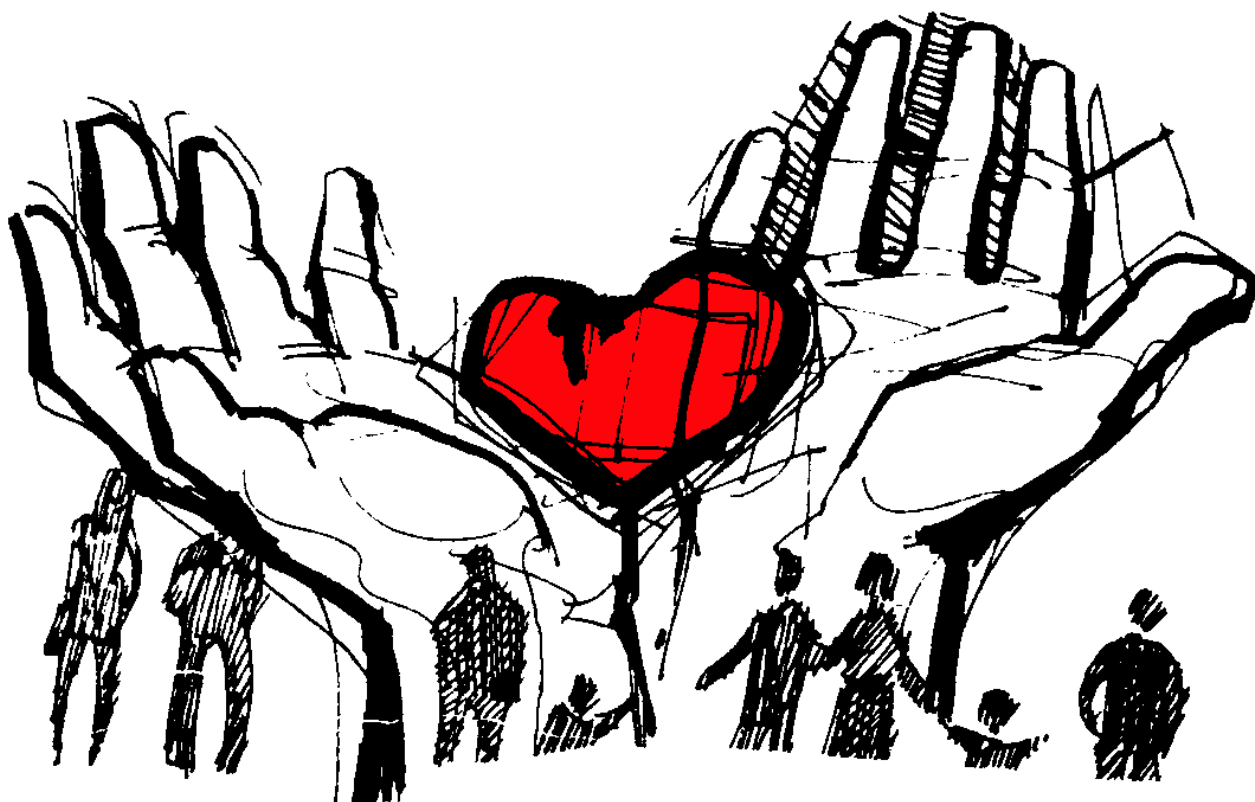
**Sweet Pea's Pantry:** hosts food distribution on the 2<sup>nd</sup> and 4<sup>th</sup> Saturday of every month from 9-11a.m. 108 W. State St., Montrose. Located in the back of the Strong Inspirations Building. (810)350-2254 [sweetpeapantry.org](http://sweetpeapantry.org)

**Old Town Christina Outreach Center:** hosts food distribution every Saturday from 8:30 a.m. - 12:30 p.m. or when food runs out. 600 Gratiot Ave. Saginaw, MI 48602 (989)249-8696

Please visit [fbem.org](http://fbem.org) for more food pantry locations.



# 2022 PER CAPITA IS \$29



**First Presbyterian Church of Taymouth**  
**12517 Morseville Road**  
**Birch Run, MI 48415**